

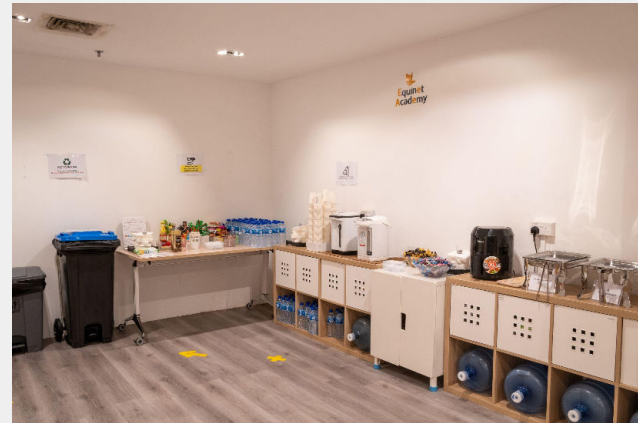
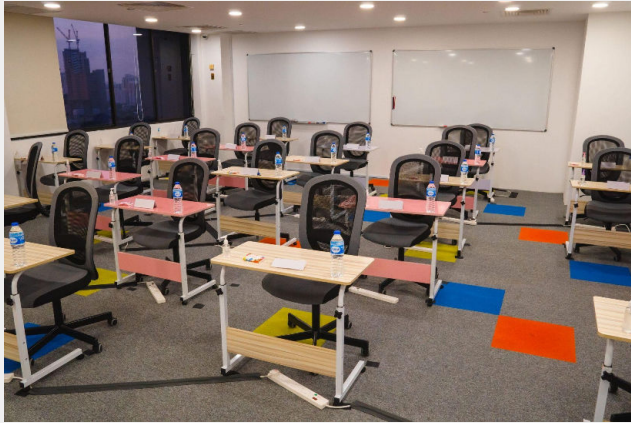
Rental Rates

Timing	Rate Weekdays
4 Hours	\$400
Full Day (9am - 5pm)	\$700
Overrun Charges (Buffer time of 30 minutes given before and after)	\$100/hour

Miscellaneous Charges

Early Set Up (before 8.30am)	\$50
Black & White Printing	\$0.50 per Page (Double Sided)
Colour Printing	\$1.30 per Page (Double Sided)
Laptop Sets (Dell Laptop, Charger, Mouse)	\$50 per Set
Flipchart	\$15 per Additional Stack
Ladies Toilet Key	\$20 per key if misplaced

Training Room Layout - 24 pax (Max)



Training Equipment & Facilities

500mbps internet connection
Projectors
Whiteboards

Flip Charts
Writing Materials
(Pens, Markers, Paper)

Movable and adjustable study
tables and computer lab chairs

You may visit <https://www.equinetacademy.com/training-facilities/> for more information on our training facilities.